

FOSROC



constructive solutions

WATER- PROOFING SOLUTIONS

LIQUID APPLIED

NITOPROOF · POLYUREA · NITOTILE · NITOBAND





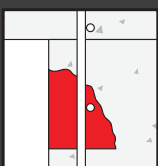
About Fosroc and Parchem

Fosroc is a world leader in construction solutions. Since the company's beginnings over 80 years ago, Fosroc has developed into an international leader in delivering construction solutions for virtually any building or infrastructure project. New or old construction above or below ground, we combine high quality products, expert technical support, customer service and innovation to give you the best solution for your project.

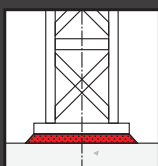
We provide construction solutions for; new and old concrete repair, grouts, waterproofing joint fillers & sealants, industrial flooring, protective coatings, surface treatments, concrete admixtures and concrete grinding aids.

Fosroc has an extensive network of offices and manufacturing locations across Europe, the Middle East, India and Asia, and is further represented in other regions across the world by distributor and licensee partners.

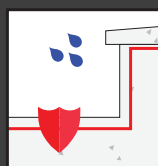
Parchem Construction Supplies, part of DuluxGroup, is the licensed manufacturer and distributor of Fosroc, Vector®, Vandex®, and EdenCrete® products in Australia, and Concrete Plus™ is the licensed distributor in New Zealand.



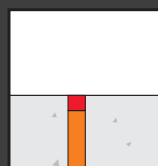
Concrete Repair



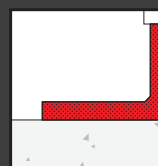
Grouts



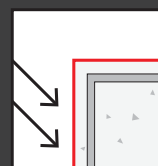
Waterproofing



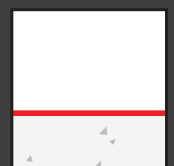
Joint Fillers & Sealants



Industrial Flooring



Protective Coatings



Surface Treatments

Fosroc Waterproofing Solutions

Fosroc offers a comprehensive range of world class waterproofing solutions and systems from below ground to high above it, including sheet, liquid and torch applied membranes.

Whether your structure will be affected by rainwater, groundwater or contaminants within the soil, Fosroc's product portfolio and expert technical advice combine to provide cost effective project solutions.

Our Range

Liquid Applied Waterproofing

Nitoproof 210

Nitoproof 310

Nitoproof 410

Nitoproof 510

Nitoproof 610

Nitoproof 750

Nitoproof 810

Nitoproof Top Coat UV

Nitoproof Top Coat EW

Polyurea WHE110

Polyurea WPE110

Waterproofing Accessories

Nitoband

Tile Adhesive

Nitotile Flex

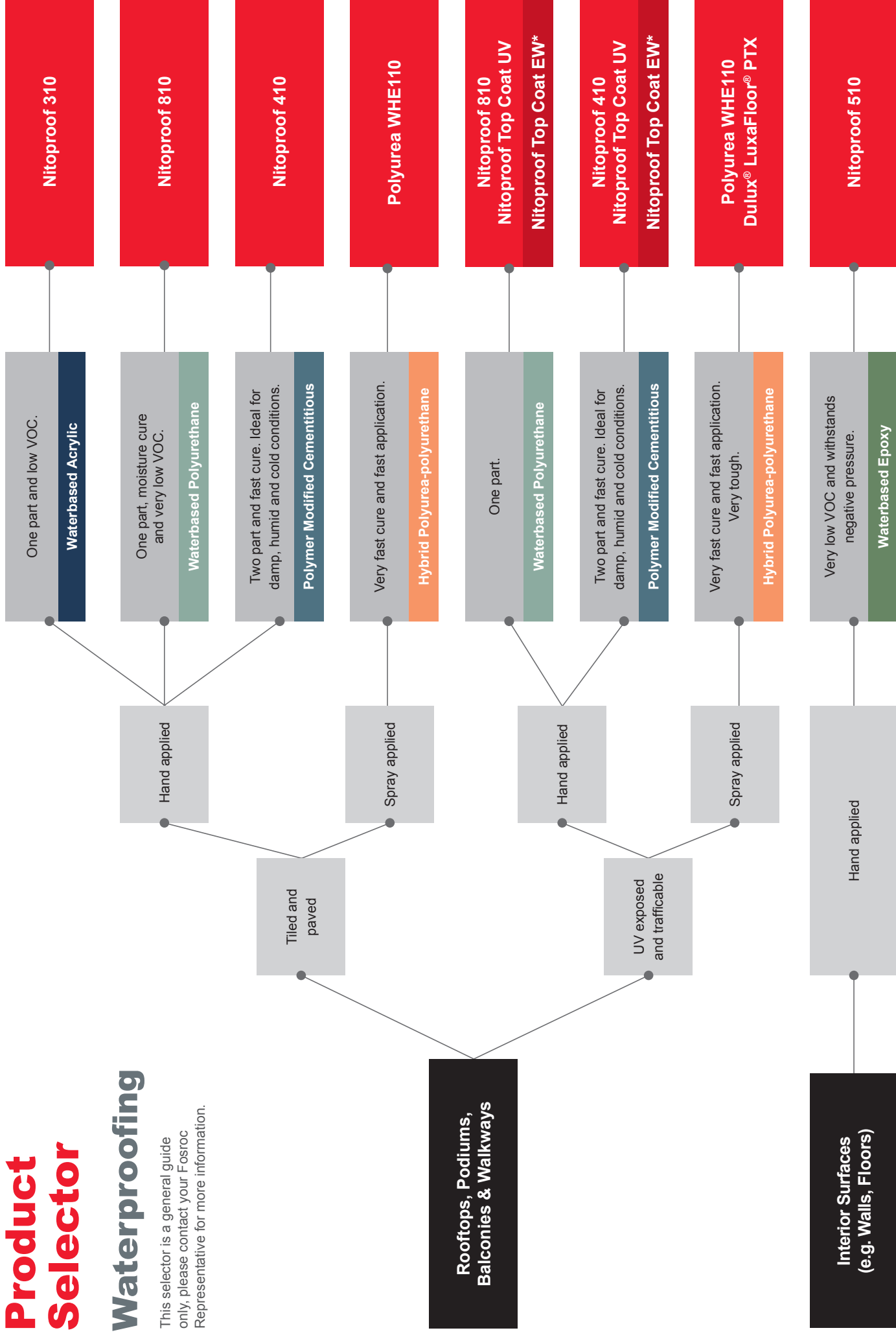


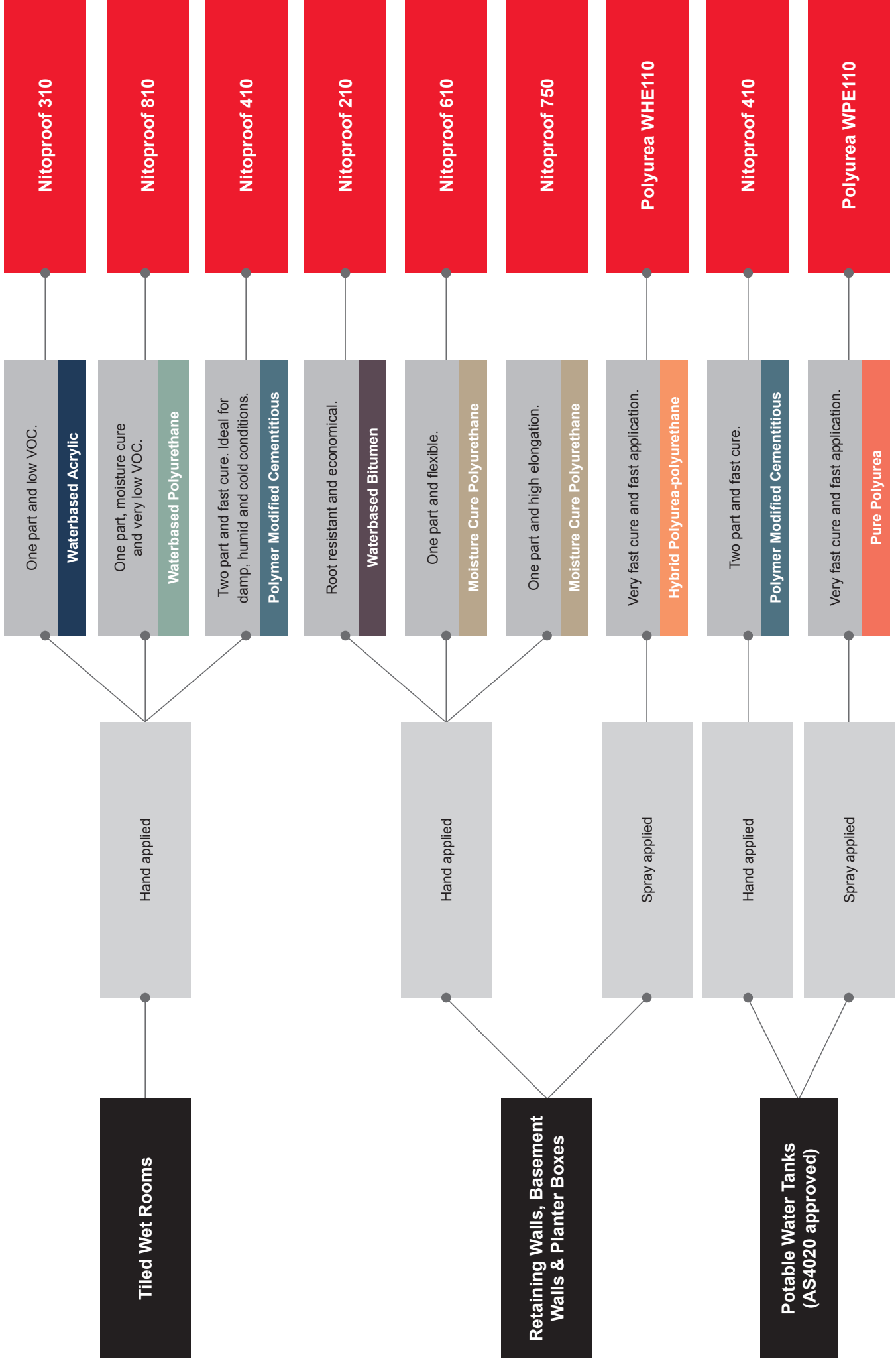


Product Selector

Waterproofing

This selector is a general guide only, please contact your Fosroc Representative for more information.





Please always refer to the product TDS before making your final selection or speak to your Fosroc representative.
 *Nitoproof Top Coat EW is an optional product used to improve stain and slip resistance and scuff marks associated with pedestrian traffic.



Product Selector

Waterproofing

This selector is a general guide only, please contact your Fosroc Representative for more information.

Typical Application	Nitoproof 210	Nitoproof 310	Nitoproof 410	Nitoproof 510	Nitoproof 610	Nitoproof 750	Nitoproof 810	Nitoproof Top Coat UV	Nitoproof Top Coat EW	Polyurea WHE110	Polyurea WPE110
Balconies - exposed (trafficable)			■				■	■	■	■	■
Balconies - tiled		■	■		■	■	■			■	■
Basement walls	■		■	■	■	■	■			■	■
Below ground	■		■		■	■	■			■	■
Deck areas - exposed (trafficable)			■				■	■	■	■	■
Deck areas - paved		■	■		■	■	■			■	
Foundations	■		■		■	■	■			■	■
Green roofs			■				■			■	■
Landscaping	■		■							■	■
Liftwells - outside faces			■			■	■			■	■
Liftwells - inside faces				■							
Planter boxes	■				■	■				■	■
Pools			■							■	■
Podium decks - exposed (trafficable)			■				■	■	■	■	■
Podium decks - paved		■	■		■	■	■			■	■
Potable water tanks			■								■
Retaining walls	■		■		■	■	■			■	■
Rooftops - exposed (trafficable)			■				■	■	■	■	■
Rooftops - paved		■	■		■	■	■			■	■
Rooftop gardens			■				■			■	■
Sandwich seal between existing & new substrates		■	■				■				
Showers		■	■			■	■			■	
Tanks			■		■	■				■	■
Terrace - exposed (trafficable)			■				■	■	■	■	■
Terraces - paved		■	■		■	■	■			■	■
Tiled and paved areas		■	■		■	■	■			■	■
Top coat								■	■		
Tunnels	■		■	■	■	■	■			■	■
Underground car park	■		■	■	■	■	■			■	■
Water features			■								■
Water storage - pools, water features			■								■
Wet areas		■	■			■	■			■	

Liquid Applied Waterproofing Product Guide

	Nitoproof 210	Nitoproof 310	Nitoproof 410
Previously known as / replaces	Emer-Proof Aqua Barrier Landscape	Emer-Proof Aqua Barrier Undertile	Emer-Proof Aqua Barrier Quick Dry
Description	A high performance single component water based bituminous rubberised liquid applied waterproofing membrane, which contains root inhibiting additives.	A fibre enhanced single component water based latex liquid applied membrane, designed for waterproofing applications where the membrane is to be covered over with tiles, screeds or concrete beds.	A water based, fast drying, flexible two component, polymer modified, cementitious waterproofing membrane designed for under toppings, tiles and other protected environments. It may also be used for foot trafficable exposed roof top membranes and foot trafficable exposed balcony decks when over coated with Nitoproof Top Coat UV.
General Advantages	Contains root penetration inhibitors.	Direct stick tiles to membrane.	Ideal for damp, cold weather or humid conditions.
Technology	Waterbased Bitumen	Waterbased Acrylic	Polymer Modified Cementitious
Internal / External	External	Internal	External / Internal
Application Type	Vertical / Horizontal	Vertical / Horizontal	Vertical / Horizontal
Number of Components	One	One	Two
Typical Applications	Retaining walls, planter boxes, building foundation walls & below ground tanking structures.	Balconies and wet areas which are being tiled over.	Waterproofing podiums, terraces, balconies and deck areas which will be protected
Pack Size	15 litres	15 litres	25kg 2 component pack
Typical Coverage Per Unit	10m ² / 15L pail @ 1.5mm WFT	10m ² / 15L pail @ 1.5mm WFT	12.8m ² / 25kg pack @ 1.5mm WFT 9.6m ² / 25kg pack @ 2mm WFT
Number of Coats	2	2	2
Cure Time (@23°C 50% RH) Unless Otherwise Stated	24 hours	24 hours	5-7 hours
Recoat Time	4 hours @ 23°C, 50% RH	2-4 hours @ 23°C	2 to 4 hours @ 23°C
Elongation	320%	>300%	320%
Complies with/meets requirements of standards	AS 4654.1**	AS/NZS 4858:2004 Class III* AS 3740	AS 4858** AS 4654.1** AS/NZS 4020:2005 AS 3740
Made In Australia	Yes	Yes	Yes
VOC Content; g / litre	Very low <15 g/l	Very low 17 g/l	Low
Colour	Black	Light grey	Grey
Product Code	FC000605-15L	FC000602-15L	FC000603-12.5L - Part A FC000604-12.5KG - Part B
Primer	Nitoproof 210 diluted 1:1 with water - for porous surfaces Nitoprime 115 - for non-porous substrates	Nitoprime 120 - for porous substrates Nitoprime 115 - for non-porous substrates	Nitoprime 120 - for porous substrates Nitoprime 115 - for non-porous substrates

*Test certificates available at fosroc.com.au and fosroc.co.nz

**Test certificate available soon

Please always refer to the product TDS before making your final selection or speak to your Fosroc representative.

Liquid Applied Waterproofing Product Guide (Cont)

	Nitoproof 510	Nitoproof 610	Nitoproof 750	Nitoproof 810
Previously known as / replaces	Emer-Proof Aqua Barrier Vapour Control		Emer-Proof 750	Emer-Proof Aqua Barrier Advanced
Description	A grey, two-component, epoxy coating will provide a moisture barrier coating to restrict passage of dampness through concrete and masonry substrates.	A single component moisture cure polyurethane liquid which cures by reaction with atmospheric moisture to give a flexible waterproofing membrane.	A single component moisture cure polyurethane liquid which cures by reaction with atmospheric moisture to give a tough flexible elastomeric waterproofing membrane.	A single component water based polyurethane membrane designed for a wide range of waterproofing applications in the built environment. Nitoproof 810 is an alternative to solvent based and moisture curing polyurethane membranes.
General Advantages	Resists negative pressure moisture transmission.	Versatile - can be applied to a wide range of substrates.	Resistant to aggressive soil conditions. Can be applied to a wide range of substrates.	Direct stick tiles to membrane. Very low VOC.
Technology	Waterbased Epoxy	Moisture cure polyurethane	Moisture cure polyurethane	Waterbased Polyurethane
Internal / External	External / Internal	External	External	External / Internal
Application Type	Vertical / Horizontal	Horizontal	Vertical / Horizontal	Vertical / Horizontal
Number of Components	Two	One	One	One
Typical Applications	Interior faces of walls, floors, basements, tunnels, cellars, retaining walls, lift wells and underground car parks.	Foundations, basements, tunnels, ground floors, suspended floors, roof terraces, balconies, patios, bridges.	Foundations, basements, roofs and tunnels.	Wet areas, enabling the direct fix of ceramic tiles, screeds, and renders over the dried membrane using Nitotile Flex polymer modified cement based tile adhesive.
Pack Size	20 litre 2 component pack	15 Litres	15 litres	15 litres
Typical Coverage Per Unit	28.6m ² / 20L pack @ 0.7mm WFT	10m ² / 15L pail @ 1.5mm WFT	10m ² / 15L pail @ 1.5mm WFT	10m ² / 15L pail @ 1.5mm WFT
Number of Coats	2	2	2	2
Cure Time (@23°C 50% RH) Unless Otherwise Stated	Touch dry 2 hours Hard cure 24 hours, 20°C Complete cure 7 days, 20°C	Tack free 3 hours, 20°C Full cure 12 hours, 20°C	Tack free 16 hours, 20°C Full cure 36 hours, 20°C	Touch dry 12 hours Hard cure 24 hours
Recoat Time	2 hours	6-12 hours	16 hours	4 hours @ 23°C, 50% RH 6 hours @ 10°C, 50% RH
Elongation	N/A	High elongation (>500%)	High elongation (>600%)	>355%
Complies with/meets requirements of standards	N/A	AS 4654.1** AS 4858** AS 3740	AS 4654.1**	AS 4654.1* AS 4858** AS 3740
Made In Australia	Yes	No	Yes	Yes
VOC Content; g / litre	Very low <5 g/l	190 g/l	123 g/l	Very low 2 g/l
Colour	Grey	Grey	Grey	Light Green
Product Code	FC000625-10L - Part A FC000626-10L - Part B	FC000627-15L	FC000609-15L	FC000608-15L
Primer	No primer required	Nitoproof 610 + up to 5% Fosroc Solvent 10 - for concrete Primer 4 - for metal surfaces	Nitoproof 510 or Nitoproof 750 + up to 40% Fosroc Solvent 10 Fosroc Primer 4 - for metal surfaces	Nitoprime 120 - for porous substrates Nitoprime 115 - for non-porous substrates

*Test certificates available at fosroc.com.au and fosroc.co.nz

**Test certificate available soon

Please always refer to the product TDS before making your final selection or speak to your Fosroc representative.

	Nitoproof Top Coat UV	Nitoproof Top Coat EW	Polyurea WHE110	Polyurea WPE110
	Emer-Proof Top Coat UV Protect	Emer-Proof Top Coat Extended Wear		
	An acrylic hybrid, hard wearing top coat designed for external applications. Exhibits outstanding adhesion properties and excellent UV weather resistance.	A solvent free hybrid sealer designed for use over Nitoproof Top Coat UV to improve stain resistance and scuff marks associated with pedestrian foot traffic. Exhibits excellent UV resistance and durability.	A spray-applied, 100% solids, flexible, two-component, rapid curing hybrid Polyurea-polyurethane system. Designed as a waterproofing and protective coating, it offers seamless coating with very long life cycles and high durability.	A spray-applied, 100% solids, flexible, two-component, rapid curing pure Polyurea system. Designed as an anti-corrosion, waterproofing and protective coating. Suitable for use in potable water applications, complies with AS 4020.
	UV resistant and slip resistance.	UV, slip resistance and wear resistance.	Rapid cure.	Rapid cure.
	Waterbased Acrylic Hybrid	Solvent Free Hybrid	Hybrid Polyurea-polyurethane	Pure Polyurea
	External	External	External	External
	Vertical / Horizontal	Horizontal	Vertical / Horizontal	Vertical / Horizontal
	One	One	Two	Two
	Suitable for use as a trafficable top coat over Nitoproof 410 and the Nitoproof 810 membranes for roofs and deck areas.	Suitable for use as a top coat over Nitoproof Top Coat UV with Nitoproof 410 and Nitoproof 810 membranes for roofs and deck areas.	Below grade waterproofing, tank coating, waste water tank lining, marine environment, roof waterproofing, aquarium lining, landscape & water containment, waterparks and secondary containment.	Below grade waterproofing, waste water tank lining, marine environment, roof waterproofing, landscape & water containment, waterparks and secondary containment.
	15 litres	15 litres	42.5kg & 425kg packs	42.5kg & 425kg packs
	19 - 25m ² / 15L	60m ² / 15L	Refer to product data sheet	Refer to product data sheet
	1 or 2	2	2 passes	2-3 passes
	Dry film 24 hours Fully weatherproof 48 hours	24 hours Note: To be applied over Nitoproof Top Coat UV after it has cured for a minimum of 48 hours.	2 minutes – walkable 20 minutes – trafficable (light)	2 minutes – walkable 20 minutes – trafficable (light)
	4 hours @ 23°C, 50% RH	2-4 hours	N/A	N/A
	>150%	150%	>350%	>350%
	N/A	N/A	AS 4858* AS 4654.1**	AS 4020:2018**
	Yes	Yes	Yes	Yes
	Low 26 g/l	Very low	Very low 18.8 g/l	Very low 11.15 g/l
	Light Grey	Opaque	Dark Grey	White
	FC000606-15L	FC000607-15L (MTO)	42.5KG PACK FC007090-22.5KG - Part A FC007091-20KG - Part B 425KG PACK FC007090-225KG - Part A FC007091-200KG - Part B	42.5KG PACK (MTO) FC007088-22.5KG - Part A FC007089-20KG - Part B 425KG PACK FC007088-225KG - Part A FC007089-200KG - Part B
	No primer required over membrane	No primer required over membrane	Nitoprime 320 PU or Nitomortar 903	Nitomortar 903

Please note that Made To Order (MTO) products need to be ordered by contacting Customer Service or your Fosroc representative. Minimum Order Quantities (MOQ) and Order Quantity Breaks apply.

Waterproofing Accessories

Fosroc Nitoband (Previously known as Emer-Proof EJB)



The Nitoband System is an alternative to traditional bond breaking methods for sealing critical joint areas. It is used in conjunction with Nitoproof water based membranes and is suitable for internal, external underground and fully immersed applications. Conforms to AS3740.

Typical applications: Bridging cracks and joints when using Nitoproof membranes.

PRODUCT CODE	DESCRIPTION	SIZE	PRODUCT CODE	DESCRIPTION	SIZE
FC000612-UNIT	NITOBAND TAPE 120MM X 10M	120MM X 10M ROLL	FC000616-UNIT	NITOBAND PIPE DETAILING SQUARE SMALL	<50MM
FC000614-UNIT	NITOBAND CORNER INTERNAL 90°	135MM X 135MM	FC000617-UNIT	NITOBAND PIPE DETAILING SQUARE MEDIUM	<110MM
FC000615-UNIT	NITOBAND CORNER EXTERNAL 270°	135MM X 135MM	FC000618-UNIT	NITOBAND PIPE DETAILING SQUARE LARGE	<150MM
FC000613-UNIT	NITOBAND CORNER ADJUSTABLE INTERNAL	135MM X 135MM			

Tile Adhesive

Nitotile Flex

Premium grade, rubber modified, flexible, white, cement based ceramic tile adhesive.



Uses

- Internal / external on wall and floor surfaces
- It can be used to bond a variety of different tiles to a variety of different substrates.
- Adheres tiles to most Nitoproof waterproofing membranes

Advantages

- Complies with ISO/AS13007.1:2013 - Class C2S1
- Internal / external on wall and floor surfaces
- Used for fixing low porosity tiles
- Fast setting

Coverage

20kg bag of Nitotile Flex will cover approximately 7 to 9m² using a 10 mm notched trowel.

Product Codes

Nitotile Flex 20kg bag: FC000618-20kg

Please always refer to the product TDS before making your final selection or speak to your Fosroc representative.

Fosroc Technology Advantages & Limitations



	Waterbased Bitumen	Waterbased Acrylic	Polymer Modified Cementitious	Waterbased Epoxy	Moisture Cure Polyurethane	Waterbased Polyurethane	Hybrid Polyurea-polyurethane	Pure Polyurea
General Technology Advantages	<ul style="list-style-type: none"> • Contains root penetration inhibitors • No priming required • Economical 	<ul style="list-style-type: none"> • One part • Low VOC • Direct stick to tiles 	<ul style="list-style-type: none"> • Fast re-coat time • High shore hardness • Top coat for exposed, trafficable finishes • Ideal for damp, humid and cold conditions • Potable water approved 	<ul style="list-style-type: none"> • Resists negative moisture pressure • Damp surface compatible • Allows vapour movement 	<ul style="list-style-type: none"> • Very high elongation • Established technology • Resistant to aggressive soil conditions 	<ul style="list-style-type: none"> • High elongation • Low solvent • Very low VOC 	<ul style="list-style-type: none"> • Very fast cure • Tenacious bond • Fast application 	<ul style="list-style-type: none"> • Very fast cure • Tenacious bond • Fast application • Potable water approved
General Technology Limitations	<ul style="list-style-type: none"> • Not advised for continuous immersion in water • Not designed for exposed conditions 	<ul style="list-style-type: none"> • Must be tiled over • Cure is dependent on temperature 	<ul style="list-style-type: none"> • Cannot be left exposed without a UV top coat • Doesn't resist negative moisture pressure 	<ul style="list-style-type: none"> • Two part material • Rigid membrane 	<ul style="list-style-type: none"> • Solvent based • High odour 	<ul style="list-style-type: none"> • Solvent based • Cannot be left exposed without a UV top coat 	<ul style="list-style-type: none"> • UV stable but not colour stable • Expensive equipment required to apply • Not suitable for potable water 	<ul style="list-style-type: none"> • UV stable but not colour stable • Expensive equipment required to apply



FUTURE PROOF

WITH FOSROC WATERPROOFING



constructive solutions

World leaders in construction solutions

Fosroc is a world leader in the delivery of virtually any type of construction project, combining high quality products, expert technical support, customer service and innovation.

AU 1800 812 864 fosroc.com.au

NZ 0800 657 156 fosroc.co.nz

Parchem Construction Supplies Pty Ltd 1956 Dandenong Rd, Clayton VIC AUS 3168
Concrete Plus Ltd 150 Hutt Park Road, Gracefield, NZ 5010

Fosroc and the Fosroc logo, are the trade marks of Fosroc International Limited, used under licence.
Dulux and Luxafloor are registered trademarks of DuluxGroup (Australia) Pty Ltd.

Project images are representations of the types of projects these products can be used for.